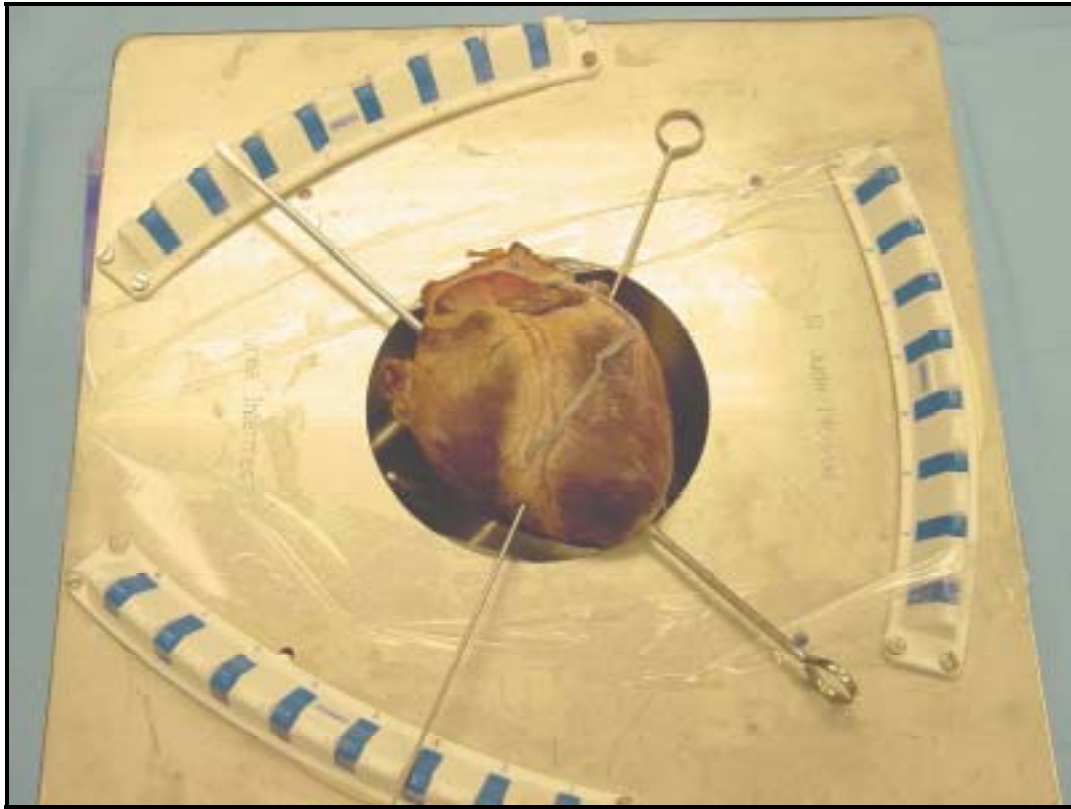
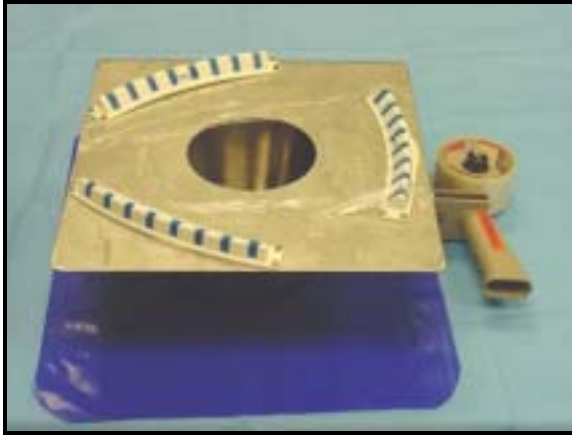


HEART VALVE REPLACEMENT/ CORONARY BYPASS



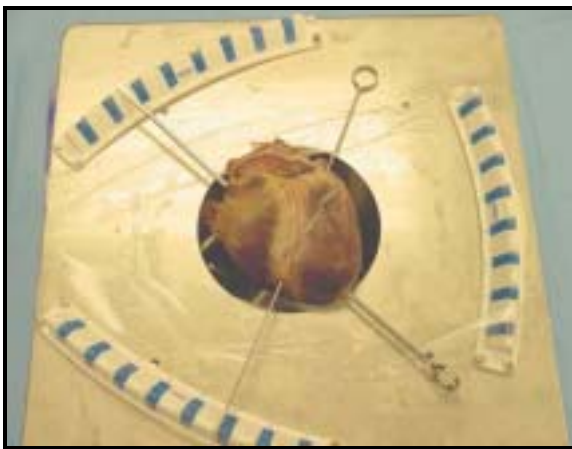
Ingredients

- Pig heart
- Basin
- Cover with circular opening in the middle, approximately 15 cm with holders for sutures (St. Jude's)
- Spikes
- Scotch tape



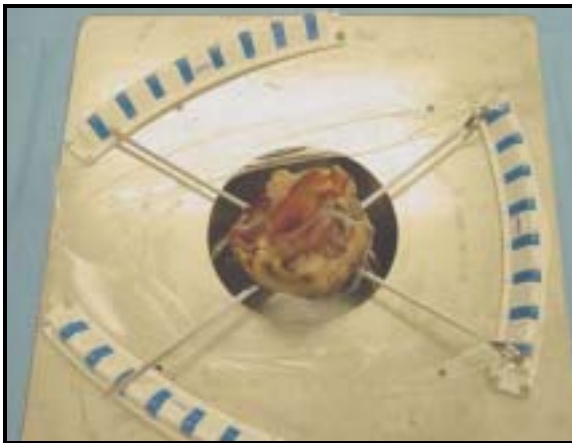
Steps

1. Place cover on top of basin
- Secure it with Scotch tape

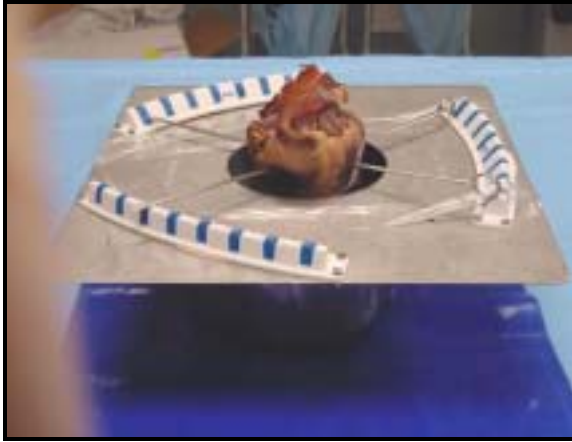


2. Position pig heart over the hole and secure with spike

- β Position the heart sideways for coronary bypass surgery



- β Position the heart hanging down for heart valve replacement



3. Secure spikes to the holder